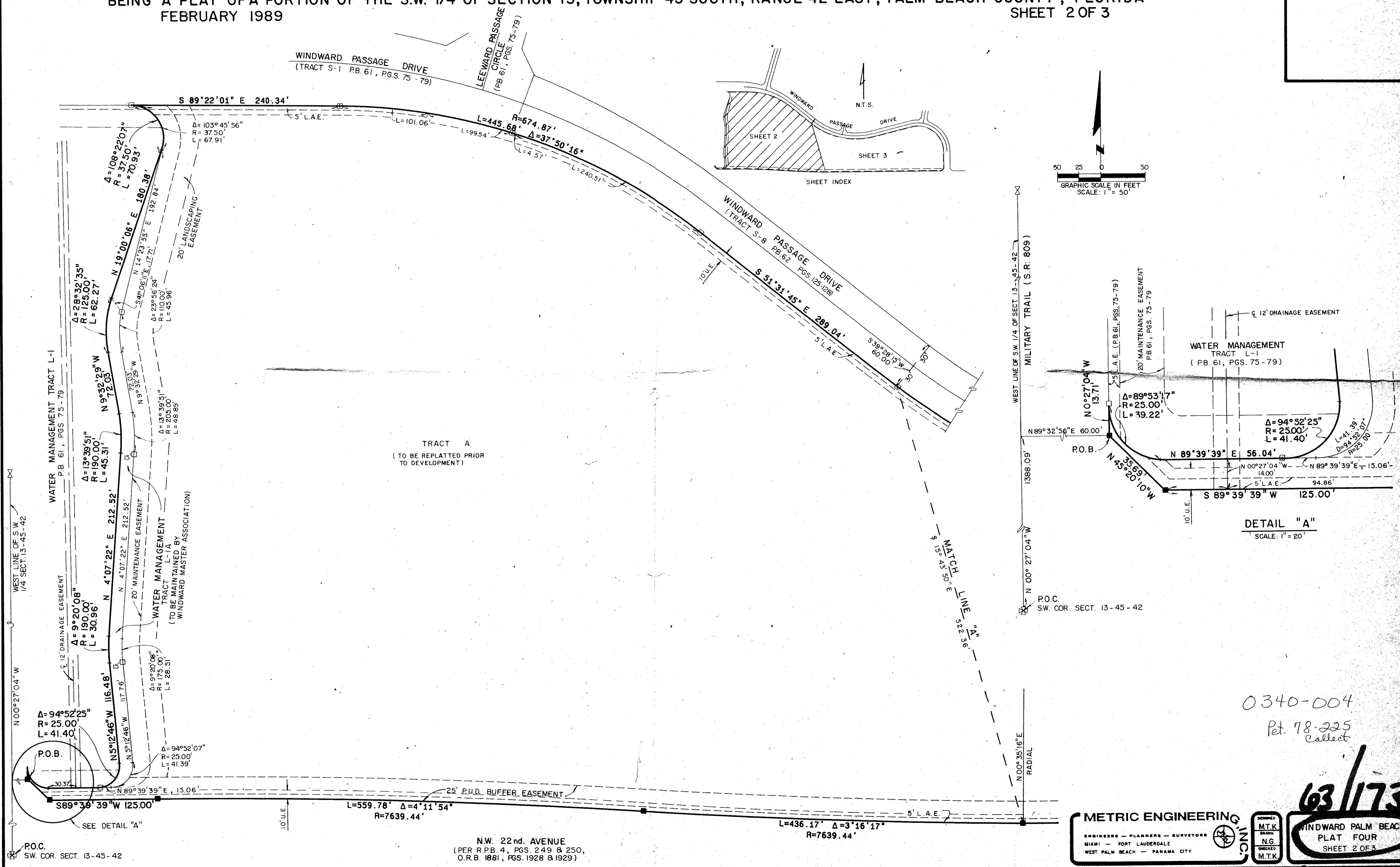


# WINDWARD PALM BEACH PLAT FOUR (A P.U.D.)

BEING A PLAT OF A PORTION OF THE S.W. 1/4 OF SECTION 13, TOWNSHIP 45 SOUTH, RANGE 42 EAST, PALM BEACH COUNTY, FLORIDA  
FEBRUARY 1989  
SHEET 2 OF 3

*Windward Palm Beach Plat*  
SUBDIVISION \*  
BOOK 63  
PAGE 173  
FLOOD MAP # 140B  
ZONING BS 78-225  
QUAD # 34  
ZIP CODE 33426  
# TAZ428  
*Windward Palm Beach Plat*



0340-004  
Pet. 78-225  
Collect

63/173  
WINDWARD PALM BEACH  
PLAT FOUR  
SHEET 2 OF 3

**METRIC ENGINEERING INC.**  
ENGINEERS - PLANNERS - SURVEYORS  
MIAMI - FORT LAUDERDALE  
WEST PALM BEACH - PANAMA CITY

FORMED  
DRAWN  
CHECKED  
M.T.K.

N.W. 22nd AVENUE  
(PER R.P.B. 4, PGS. 249 & 250,  
O.R.B. 1081, PGS. 1928 & 1929)